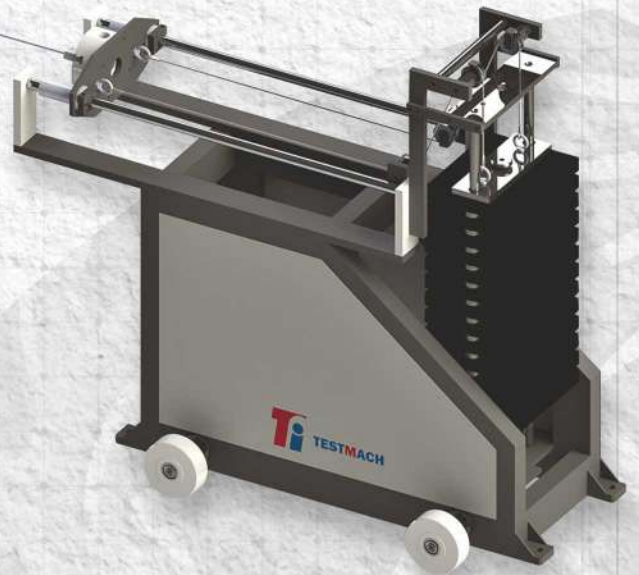


INNOVATIVE • PRECISION • AUTOMATION



**TESTMACH**®

QUALITY ASSURANCE &  
QUALITY CONTROL TESTING MACHINES



- Established in 2003, at **TESTMACH INTECH LLP**. We design, manufacture & export wide range of Customized Mechanical Testing equipment. Our machines are used in Quality Control (QA/QC), Testing & Evaluation for various industries like:
  - Cables manufacturers (OFC / ADSS / OPGW / Patch code / FTTH).
  - Conductor manufacturers (Conventional and HTLS Conductor).
  - HT-LV / MV / EHV / Power / Covered Conductor / Telephone / Instrumentation Cables.
  - Wire & Rod, Spring wire / Insulator / FRP / Hardware's.
  - Nylon rope / Yarn / Textiles / Woven & Nonwoven Sacks.
  - Polymer Compounds / Plastic / Plastic film / Pipe & Conduit.
  - Rubber / Automobile / Glass / Leather / Wood/Paper, etc.
- **We are designing these types of equipment from last two decades. We have our world class service and support team.**

#### STANDARD USE:

ASTM // IEC // ISO // IEEE // EN // BS EN

AS // BT // IS // DS -HD // FOTP // SAE // PGCL



## TESTMACH INTECH LLP

(Formerly known as Intech System & Automation)

ISO 9001-2015 CERTIFIED COMPANY

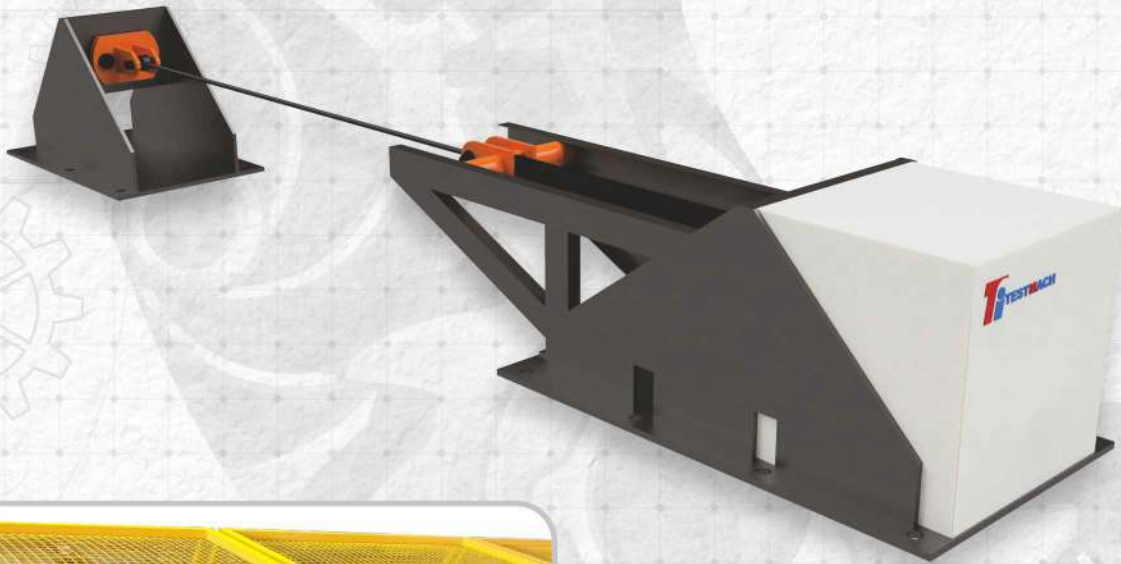
Plot No. 46 / 6, Damanganga Industrial Park, VAPI-396193. Gujarat. India.

Cell: +91 9924789891 | +91 9924647991 | Website : [www.testmach.net](http://www.testmach.net)

Email: [prashant.patil@testmach.net](mailto:prashant.patil@testmach.net) | [sales@testmach.net](mailto:sales@testmach.net)



## HORIZONTAL TENSILE TESTING MACHINES:



Horizontal Tensile Testing Machine is designed specifically for tensile testing for long specimens and high elongation demands such as long Overhead conductors | Cables | Nylon rope | Wire rope | Steel bar | Chain | Sling belt | Webbing | Insulator | Hardware's etc.

PC-based machine control software provided with the machine is upgraded to include data acquisition and data analysis.

**Model:** Hydraulic & Electro-mechanically System based

**Capacity:** 1 kN to 10000 kN

### TESTS TO BE PERFORMED:

- Ultimate Tensile Test (UTS)
- Stress-Strain test,
- Creep test,
- Brittle fracture test,
- Proof Test
- Strain Margin test,
- Cyclic test (Ambient / Temperature)
- Torque-Force test



INNOVATIVE • PRECISION • AUTOMATION

### Universal Testing Machines (UTMs):

**TestMach®** is the leading specialist manufacturer and supplier of UTM testing machines like electromechanical and hydraulic based systems to perform static testing // tensile // compression // bend // Flexural // peel // Tear // shear // friction // puncture // and other mechanical tests.

It is possible to perform such tests on raw materials such as metals, polymers, textiles, Yarn, Fiber, FRP, rubbers, adhesives as well as finished components in accordance with key international testing standards including:

ASTM | IEC | ISO | IEEE | EN | BS EN | AS | BT | IS | DS-HD



### Environmental Chambers with UTM Integration:

Environmental Chambers are used for a wide variety of tests to be performed at low & high (elevated) temperatures and these Chambers are integrated with a universal testing machine (UTM) for allowing various testing. Environmental Chambers come with their own temperature controller and, depending on the system's compatibility.

Temperature Range: Customize as per the test requirements.



QUALITY ASSURANCE &  
QUALITY CONTROL TESTING MACHINES





### Extensometer:

**TestMach®** offers contact based as well as non-contact based extensometers to perform high-accuracy, high-resolution, non-contacting axial strain and displacement measurements. These extensometers are suitable for materials such as metals and composites, high-elongation materials, thin or delicate specimens applications. Strain or extension is measured and output in real time.



### Non-Contacting Video Extensometer:

This video extensometer is a non-contacting extensometer that can measure displacement of two attached markers on the specimen, using high-resolution digital camera technology (do not exhibit any influence on the test specimen)



## TESTMACH INTECH LLP

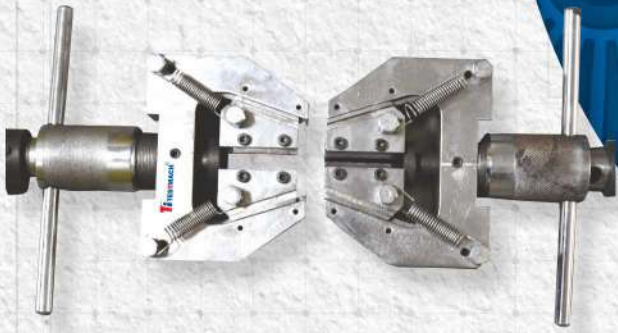
(Formerly known as Intech System & Automation)

ISO 9001-2015 CERTIFIED COMPANY

Plot No. 46 / 6, Damanganga Industrial Park, VAPI-396193. Gujarat. India.  
Cell: +91 9924789891 | +91 9924647991 | Website : [www.testmach.net](http://www.testmach.net)  
Email: [prashant.patil@testmach.net](mailto:prashant.patil@testmach.net) | [sales@testmach.net](mailto:sales@testmach.net)



INNOVATIVE • PRECISION • AUTOMATION



## GRIPS AND FIXTURES:

The grips and attachments are designed to hold the specimen. **TestMach®** offers a wide variety of tensile grips & fixtures for different testing application. Our grips are useful for materials such as thread, rope, Yarn, Fiber, FRP, Fabric, rubber, elastomers, plastic, composites, wire, metals, and more. For those with unique applications, our custom engineering group will gladly design a grip to suit your situation. **TestMach®** grips comply with all global testing standards.



## Tensile Grips:

- Wedge Type Tensile Grips (Lever Operated)
- Wrap type Gripper
- Pneumatic/Hydraulic Wedge Type Tensile Grips
- Vise Type Gripper
- Screw Side Action Tensile Grips
- Self-Tightening Roller Tensile Grips
- Yarn Tensile Grips
- Rope (Cord Capstan) Type Tensile Grips
- Webbing Tensile Grips
- Fabric Loop Tensile Grips
- Wide width gripper
- Grab/Tear Test gripper
- Dumbbell tensile gripper



**TESTMACH®**

QUALITY ASSURANCE &  
QUALITY CONTROL TESTING MACHINES



## Fixtures:

- Flexural Fixtures
- Peel test Fixtures
- Compression Fixtures
- Shear test fixtures
- Puncher test Fixture
- CBR Test Fixture
- Cling Test fixture
- Sling Belt Test Fixture



## TESTMACH INTECH LLP

(Formerly known as Intech System & Automation)

ISO 9001-2015 CERTIFIED COMPANY

Plot No. 46 / 6, Damanganga Industrial Park, VAPI-396193. Gujarat. India.  
Cell: +91 9924789891 | +91 9924647991 | Website : [www.testmach.net](http://www.testmach.net)  
Email: [prashant.patil@testmach.net](mailto:prashant.patil@testmach.net) | [sales@testmach.net](mailto:sales@testmach.net)



INNOVATIVE • PRECISION • AUTOMATION



## Optical Fiber Cable (OFC) | ADSS | Patch Code | FTTH Cable:

**TestMach®** has established itself as a leader in the testing machines useful for manufacturing OFC, HTLS/Conventional conductor & all types of Cables. We are known for creative design, updating technology, quality and on-time delivery. Below are highlights of testing types:



### Horizontal Tensile Test:

- |                              |                                      |
|------------------------------|--------------------------------------|
| ● Abrasion Test              | Sheave Test                          |
| ● Torsion Test               | Galloping Test                       |
| ● Impact Test                | Aeolian Vibration Test               |
| ● Compression (Crush) Test   | Creep Test                           |
| ● Abrasion Test              | Drop Test                            |
| ● Bending Under Tension Test | Nuatation test                       |
| ● Bend Test                  | WPT Test                             |
| ● Repeated Bend              | Tube Kink Test                       |
| ● Flexing Testing Machine    | Stiffness Test                       |
| ● Axial Compression Test     | Ribbon residual & Dynamic Twist Test |
| ● Snatch Test                | Fiber Stripping Force Test           |
| ● SAG Test                   | Friction Testing Machine             |



QUALITY ASSURANCE &  
QUALITY CONTROL TESTING MACHINES



## OPGW Cable | HTLS Conductor | Hardware's | Insulator Fiber Optic Joint Enclosure Box (Terminal Box)

### Horizontal Tensile Test

- Galloping Test
- Aeolian Vibration Test
- Abrasion Test
- Torsion Test
- Impact Test
- Compression (Crush) Test
- Bending Under Tension Test
- Bend Test
- Repeated Bend
- WPT Test
- CT-PT Test
- FLEXURE & TORSION TEST
- SHOWER TEST

### Axial Impact Test

- Sheave Test
- Creep Test (Ambient)
- High Temperature Creep Test
- High Temperature Cycle Test
- Torsional Ductility Test
- Stress-Strain Test
- Stress-Strain Test @ Elevated Temperature
- UTS Test
- Cable Strain Margin Test
- Torque Force Test
- Brittle Fracture Test
- DROP & TOPPLE TEST
- STATIC LOAD



## TESTMACH INTECH LLP

(Formerly known as Intech System & Automation)

ISO 9001-2015 CERTIFIED COMPANY

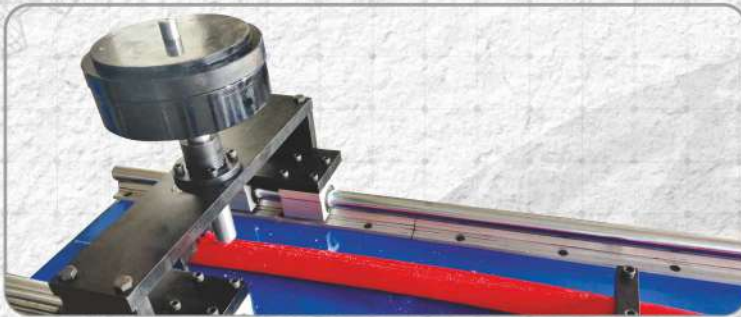
Plot No. 46 / 6, Damanganga Industrial Park, VAPI-396193. Gujarat. India.  
Cell: +91 9924789891 | +91 9924647991 | Website : [www.testmach.net](http://www.testmach.net)  
Email: [prashant.patil@testmach.net](mailto:prashant.patil@testmach.net) | [sales@testmach.net](mailto:sales@testmach.net)





## HT-LT-LV | MV | EHV | Power | Covered Conductor | Telephone | Instrumentation Cables:

**TestMach®** has established itself as a leader in the testing needs for the manufacturing of different types of Cables like HT-LT, Instrumentation & wire and Rods, Springs, Conduit. Our Company is known for its creative design, updating technology, quality and on-time delivery. Below are examples of testing types:



- Tensile Test
- Creep Test
- Abrasion Test
- Flexing Testing Machine
- FLAME (Ladder) TEST
- Stress-Strain Test
- Slippage Test
- Torsion Test
- Cable Strain Margin Test
- Temperature Cycle Test

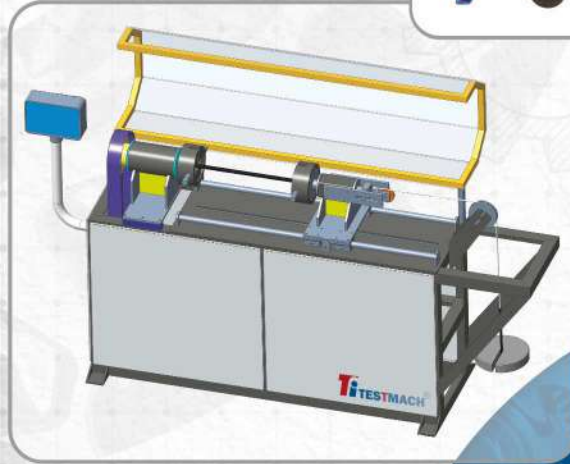


QUALITY ASSURANCE &  
QUALITY CONTROL TESTING MACHINES



## Wire & Rod | Spring wire | Conduit Pipe

- Torsion Test (Wire)
- Wrapping/Un wrapping Test (Wire)
- Abrasion Test
- Compression Test
- Tensile Test
- Relaxation Test (Wire)
- Impact Test
- Bend Test
- Slippage Test



## TESTMACH INTECH LLP

(Formerly known as Intech System & Automation)

ISO 9001-2015 CERTIFIED COMPANY

Plot No. 46 / 6, Damanganga Industrial Park, VAPI-396193. Gujarat. India.  
Cell: +91 9924789891 | +91 9924647991 | Website : [www.testmach.net](http://www.testmach.net)  
Email: [prashant.patil@testmach.net](mailto:prashant.patil@testmach.net) | [sales@testmach.net](mailto:sales@testmach.net)